

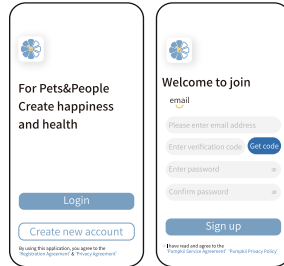
Pumpkii Pet Camera Treat Dispenser BQ50: A Quick Guide

Scan the QR code or search 'Pumpkii' to download the app.



1

Register with your email.



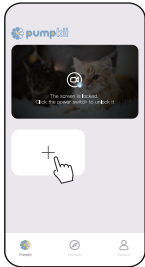
2

Turn on the device by pressing the bottom switch until you hear 'starting'.



3

Tap '+' in the app to start pairing. You'll hear 'waiting for network configuration' as it searches for a Wi-Fi.



4

Name the device and connect to a 2.4G Wi-Fi with name and password.



5

Place the Pumpkii app QR code 6 inches from the device.



6

Once 'connect network successfully' sound, tap 'Next'.



7

For pairing issues, reset by holding the bottom switch for 10 seconds until you hear 'restore factory setting' sound, enabling reconnection.



8

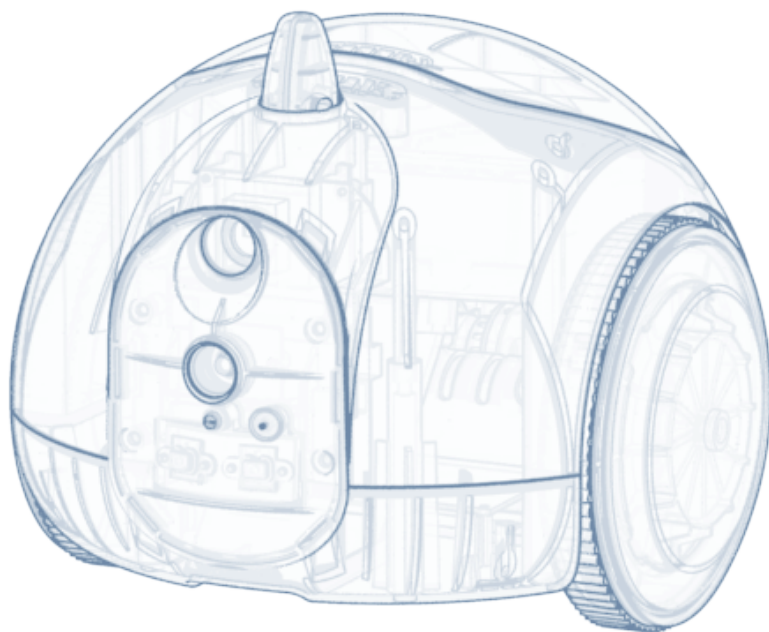
Check out the Pumpkii app for user manual, FAQ and customer service.

Website: www.pumpkii.com, Email: service@pumpkii.com, Tel: (872)903-4094

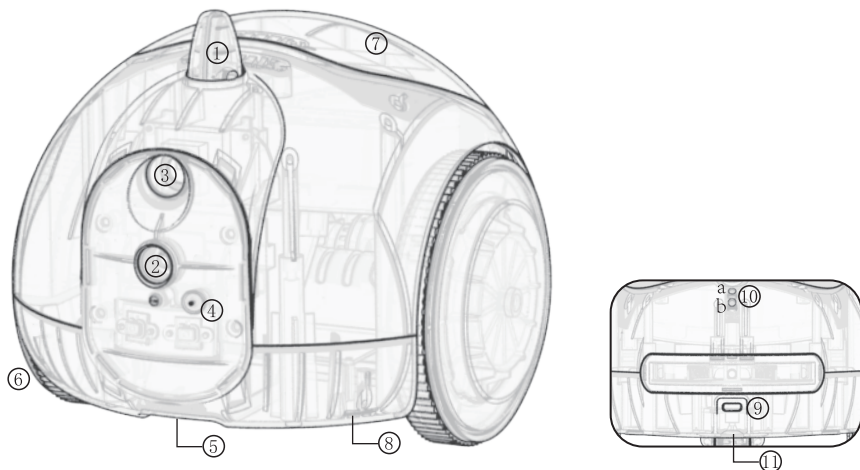
Pumpkii Model BQ50

Pet Companion Robot

User Manual V2.1



Specification



1. Replaceable Toy Socket

2. HD 1080P Video Camera

3. Night Vision

4. Mic

5. Snack Feeder

6. Wheels

7. Snacks Cover

8. Speaker

9. Type-C Charging Port

10. From top to bottom

a: Device started / Device connected
(Blinking blue light: search for Wi-Fi signal;
Blue light on: device connected to router)

b: Device charging indicator
(Red: charging; Blue: full charged)

11. Turn On/Off Switch

Press and hold for 3s to turn on/off

Press and hold for 10s to restore factory settings

Packing List



Pumpkii



Charging Dock



Type C Cable



Feather Toy



Quick Guide

1. Install the App

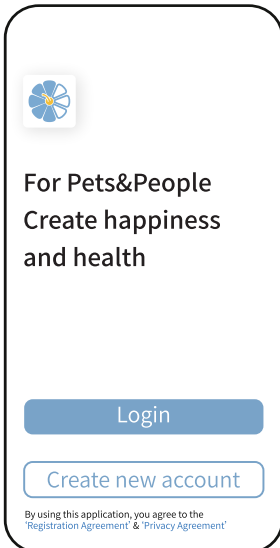


Download the Pumpkii app by scanning the QR code or searching for 'Pumpkii' on your App Store or Google Play.

2. Sign In

Register an account using your email, then log in to Pumpkii. Click '+', and follow the prompts to complete the initial pairing of your Pumpkii.

Note: In the settings, grant Pumpkii access to Local Network and Camera, and enable Wireless Data usage for WLAN and Cellular Data.

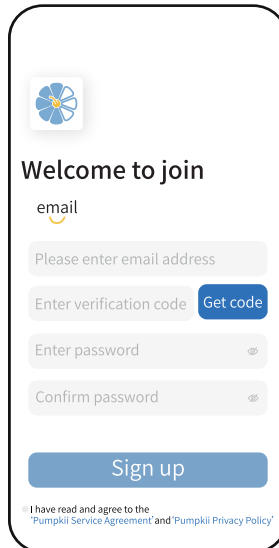


For Pets&People
Create happiness
and health

Login

Create new account

By using this application, you agree to the 'Registration Agreement' & 'Privacy Agreement'



Welcome to join

email

Please enter email address

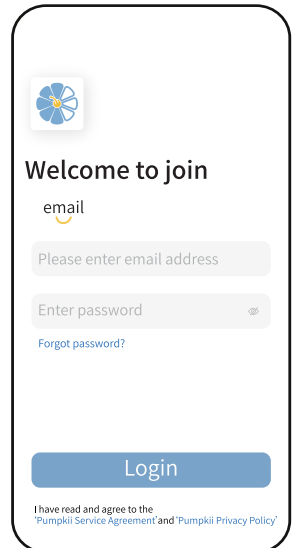
Enter verification code [Get code](#)

Enter password

Confirm password

Sign up

I have read and agree to the 'Pumpkii Service Agreement' and 'Pumpkii Privacy Policy'



Welcome to join

email

Please enter email address

Enter password

[Forgot password?](#)

Login

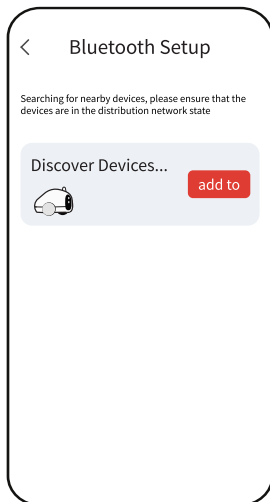
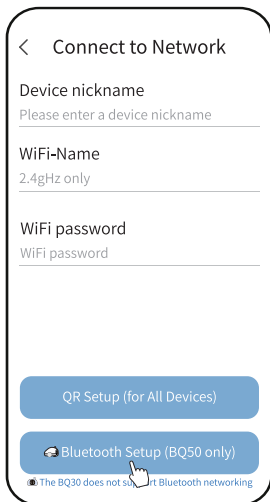
I have read and agree to the 'Pumpkii Service Agreement' and 'Pumpkii Privacy Policy'

3. Connect to a 2.4G Wi-Fi Network

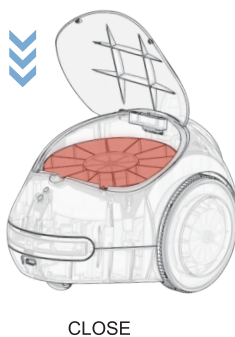
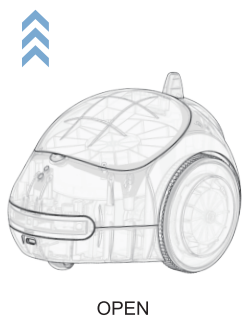


Note: When connecting Pumpkii, ensure that your phone is connected to a 2.4G Wi-Fi network and setup the device with the 2.4G Wi-Fi name and password.

4. If you encounter issues connecting Pumpkii to a 2.4G Wi-Fi network, you have the option to connect the device using Bluetooth

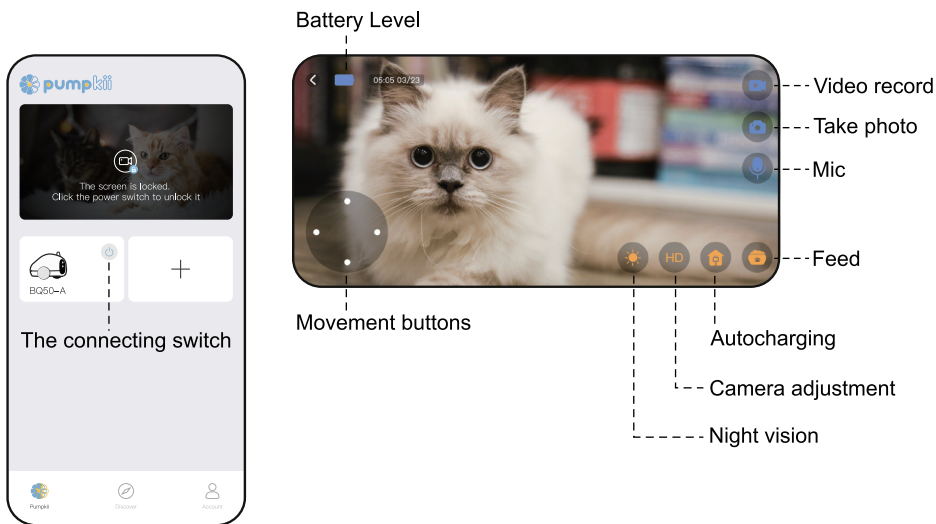


5. Load with Treats



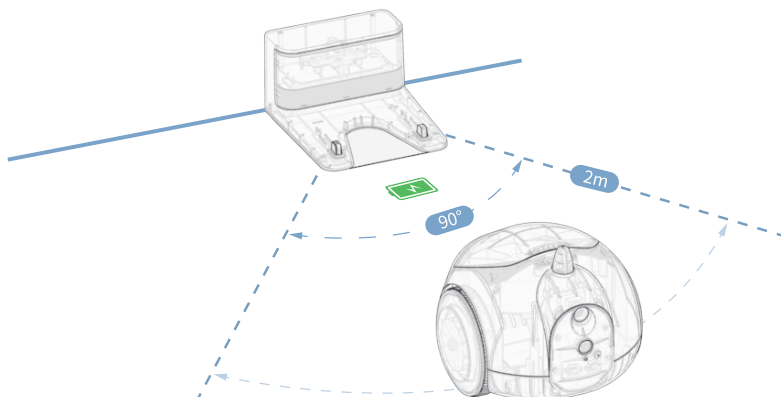
Important: Load dry food only, as wet food is not suitable. The treat dispenser is designed to accommodate treats with sizes ranging from 0.2x0.2 to 0.6x0.6 inches.

6. The Interface



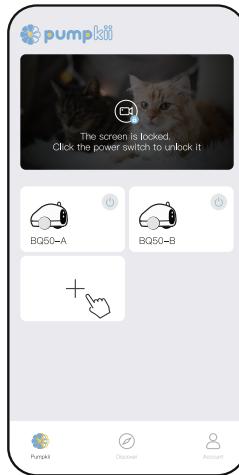
7. Auto-Charging

Drive the device close to the dock (showing below) and tap the 'auto-charging' icon on Pumpkii app interface. Ensure there is no objects around the dock.



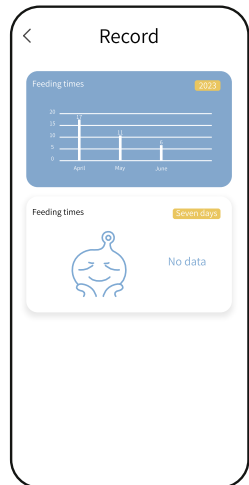
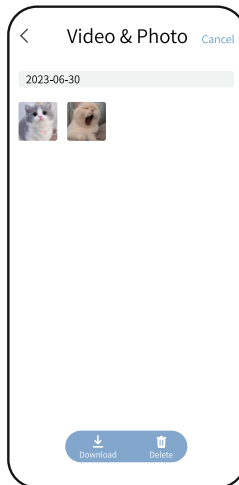
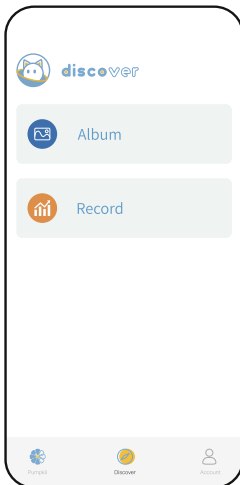
8. Pair Multiple Devices

Tap the '+' icon on the home page to add a device, then follow step 3 to complete the pairing process.



9. Discover

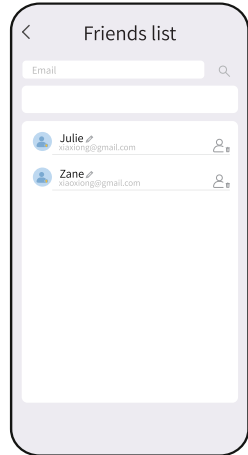
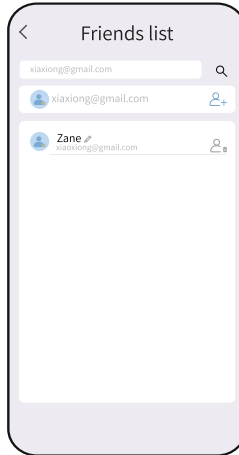
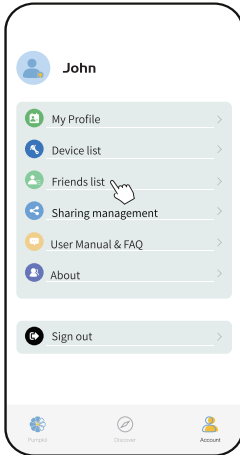
Pumpkii captures videos and photos that can be saved to your photo album for easy sharing with family and friends.



10. Add Friends

On your 'Account' page, tap 'Friends list' and search for their email addresses to add them to your friend list.

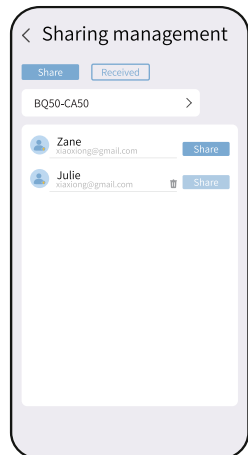
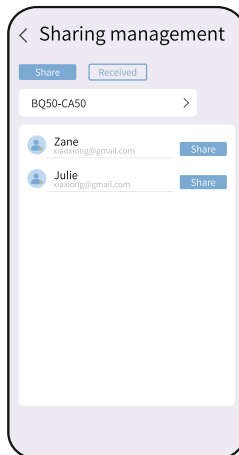
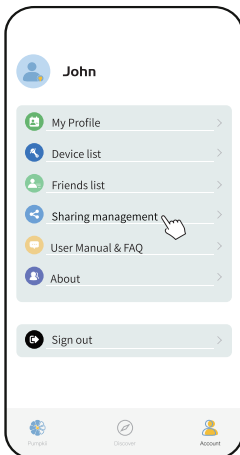
Notes: Please ensure that your friend is registered with the Pumpkii app.



11. Share

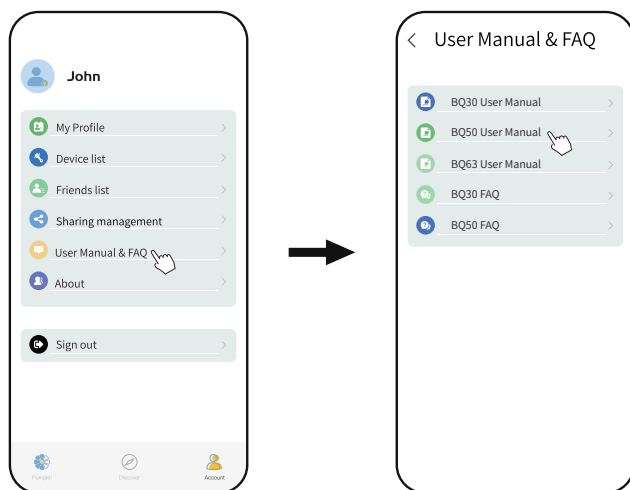
On your 'Account' page, tap 'Share' (on Android, tap 'To Share') to grant device control function to others.

Note: Please ensure that the shared user is registered with the Pumpkii app.



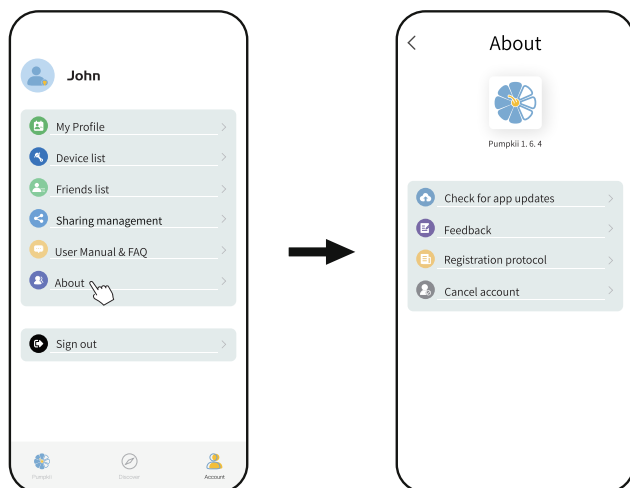
After successfully sharing, please confirm with your friend if the sharing was successful. You can delete the sharing when you don't want to share.

12. User Manual & FAQ



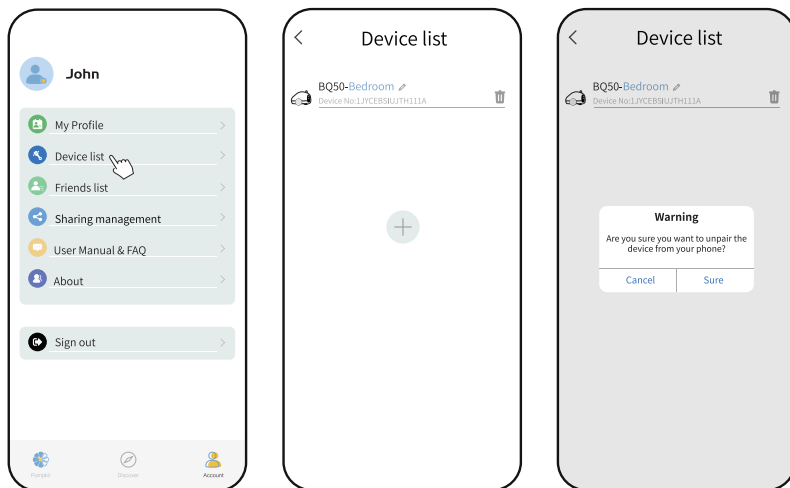
13. About

For software upgrades and any other issues, please don't hesitate to contact us.



14. Unpair

To unpair the device, tap 'Account' to access the 'Device list', then tap the '🗑️' icon next to the device. Confirming the unpairing by tapping 'Sure' in the warning prompt.



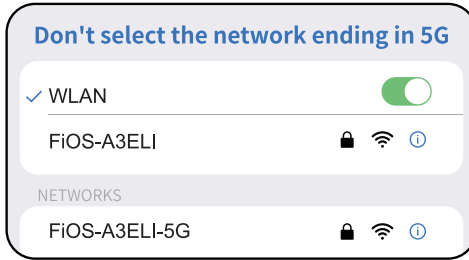
15. Restore Factory settings

Hold down the switch located on the bottom for 10 seconds until you hear the 'restore factory setting, don't power off' sound prompt. This will allow you to reconnect your device again.



Please note

2.4G Wi-Fi Compatibility: Pumpkii is designed to work with 2.4GHz Wi-Fi networks. With a regular single router, you can usually see two IDs, 2.4G and 5G. Please connect to the 2.4G network. Most mesh routers are compatible with 2.4G, although some may require splitting the 2.4G and 5G networks. For more information regarding FAQs on mesh router compatibility, please visit our website at www.pumpkii.com.



Device Access: Grant the device access to Local Network, Camera, and other necessary features. Enable Wireless Data usage for both Wi-Fi and Cellular Data connections.

